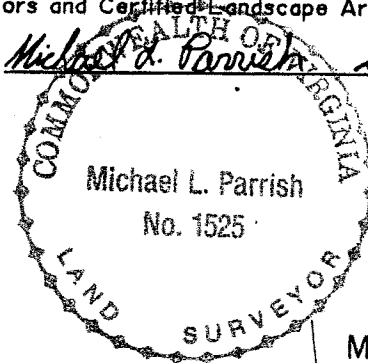


**NOTE:**

Area encompassed by A,B,C,D is being claimed by Linwood W. & D. Joyce Johnson; HOWEVER, based on deeds and plats of record in the Circuit Court Clerk's Office Goochland, Virginia the corners are as shown on this plat.  
 REFERENCES: DB 192-228 Plat DB 124-297; DB 199-158 Plat DB 199-160; DB 104-1 PB 13-73. DB 135-83.

I hereby certify that this boundary survey, to the best of my knowledge and belief, is correct and complies with the minimum procedure and standards established by the Board of Architects, Professional Engineers, Land Surveyors and Certified Landscape Architects.

*Michael L. Parrish* 26 MAY 1988



**NOTE:**

This parcel is not located in a special flood hazard area as designated by HUD. (This parcel is in ZONE C.)



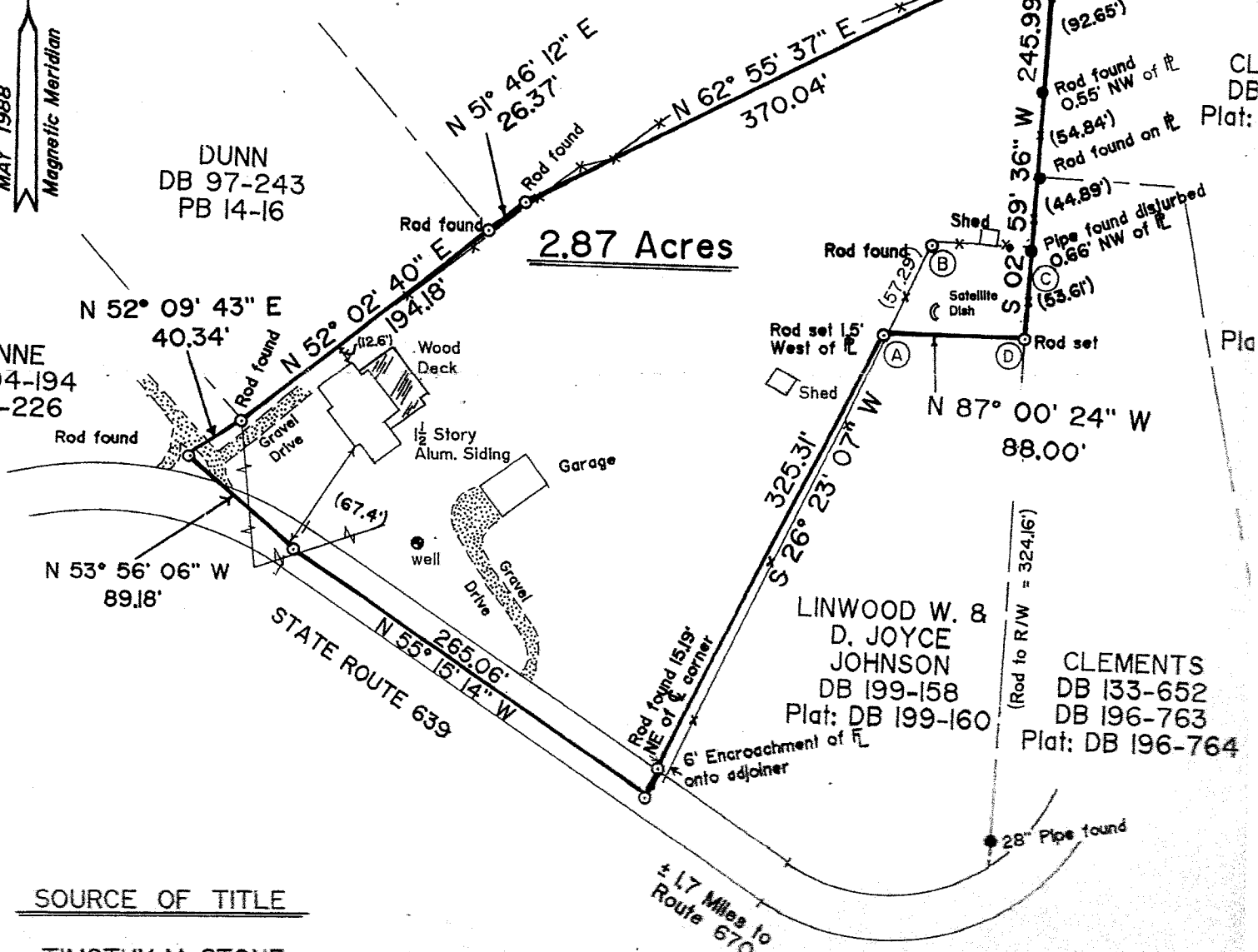
JOSEPH T. & GILLAN WYNNE  
 DB 204-194  
 PC A-226

MARVIN H. JR. & CLEMENS  
 DB 135-3  
 Plat: DB 135-3

DUNN  
 DB 97-243  
 PB 14-16

**2.87 Acres**

WYNNE  
 DB 204-194  
 PC A-226



Linwood W. & D. Joyce Johnson  
 DB 199-158  
 Plat: DB 199-160

CLEMENS  
 DB 133-652  
 DB 196-763  
 Plat: DB 196-764

Other boundary bearings and distances:  
 N 51° 46' 12" E 26.37'  
 N 62° 55' 37" E 370.04'  
 S 02° 59' 36" W 245.99'  
 S 02° 59' 36" W 245.99'  
 N 87° 00' 24" W 88.00'  
 S 26° 23' 07" W 325.31'  
 N 55° 15' 14" W 265.06'  
 N 52° 09' 43" E 40.34'  
 N 52° 02' 40" E 194.18'  
 N 53° 56' 06" W 89.18'

SOURCE OF TITLE  
 TIMOTHY M. STONE  
 LESLIE R. STONE