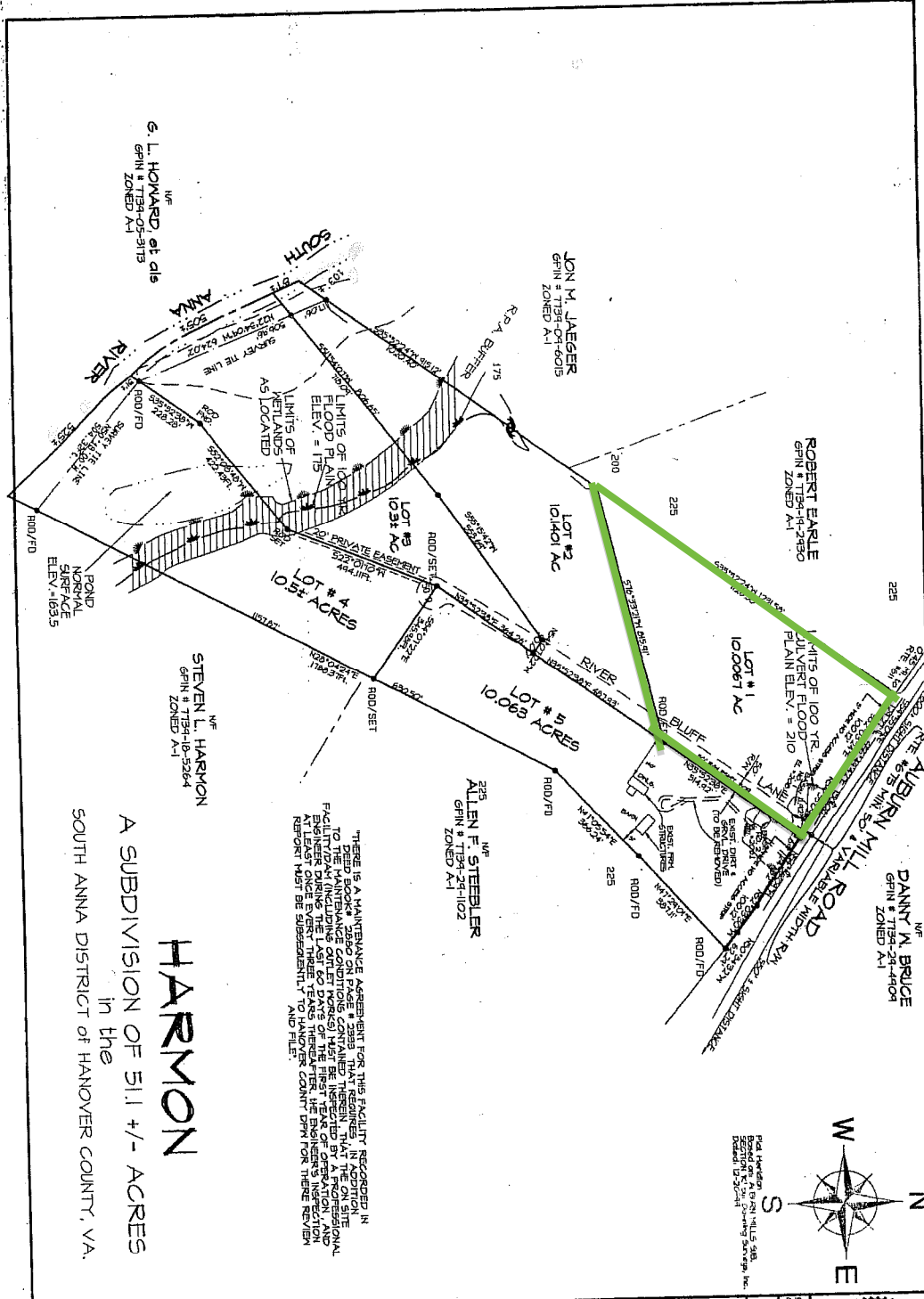
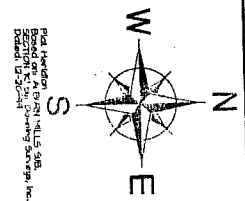


See Deed Book 2807, page 28A1



THESE ARE A MAINTENANCE AGREEMENT FOR THIS FACILITY RECORDED IN DEED BOOK 2800 ON PAGE 2893 THAT REQUIRES, IN ADDITION TO THE MAINTENANCE CONDITIONS CONTAINED THEREIN, THAT THE FACILITY BE OPERATED DURING THE LAST 60 DAYS OF THE FIRST YEAR OF OPERATION, AND AT LEAST ONCE EVERY THREE YEARS THEREAFTER, BE SUBJECT TO A REVIEW REPORT MUST BE SUBMITTED AND FILED.

A SUBDIVISION OF 51.1 +/- ACRES
in the
HARMON
SOUTH ANNA DISTRICT OF HANOVER COUNTY, VA.



DOWNING SURVEYS, INC.

305 S. WASHINGTON HWY SUITE "K" ASHLAND, VA. 23005
(PH) 798-6795 & 748-3609 (FAX) 798-3546

OSMAN BY: GHW/DDS
DATE: J.L. 24, 2005
SCALE: 1" = 200'
N. 050918

COMMONWEALTH OF VIRGINIA
George K. Robertson
11 15 11 07
LAND SURVEYOR
SHEET 2 OF 2
GHW/DDS/OSMAN
GHW/DDS/OSMAN/1/2/1/1